

Q1: Solve. Use paper to show your work. Enter your answer in the box.

$$40,855 + 693 + 722,195 = \boxed{}$$

Q2: Kwan and Kelsey are training for a race. Kwan runs 3 kilometers 245 meters on a path through the park. Kelsey runs 829 meters less than Kwan. How many meters do they run in total? Use paper to show your work. Enter your answer in the box.

Kwan and Kelsey run meters in total.

Q3: The students at Viewside Elementary School had a Read-a-Thon. The teachers kept track of how many books the students in each grade level read.

Read-a-Thon Results	
Kindergarten	247
First Grade	385
Second Grade	1,374
Third Grade	1,549

Part A

Estimate the total number of books the students read. Round each number to the nearest hundred to help you find your estimate. Use paper to show your work.

The total number of books read was about .

Part B

Exactly how many books did the students in the school read? Use your answer from Part A to determine if your answer to Part B is reasonable. Explain your thinking.

The total number of books read was .

Explanation:

Q4: Solve. Enter your answer in the box.

$$\begin{array}{r} 700,000 \\ - 36,412 \\ \hline \end{array}$$

Q5: Solve. Enter your answer in the box.

$$62,703 - 8,945 = \boxed{}$$

Q6: Mr. Stevenson owns a bookstore. At the beginning of January, he had 528,741 books in his store. He sold 3,582 books that month and gave away 863 books.

Part A

About how many books are left in the store? Estimate by rounding each number to the nearest thousand.

There are about books left in the store.

Part B

Use the standard subtraction algorithm to find the exact number of books left in the store. Is your answer reasonable based on your estimate in part A? Explain.

There are books left in the store.

Explanation

Q7: Mr. Smith paid \$232,300 for his home and \$33,560 for his car. Mr. Lewton paid a total of \$282,106 for his home and car combined. How much more money did Mr. Lewton pay than Mr. Smith for a home and car?

- A** \$265,860
 - B** \$248,546
 - C** \$49,806
 - D** \$16,246
-

Q8: Solve.

$$\begin{array}{r} 748,065 \\ + 39,471 \\ \hline \end{array}$$

Q9: Convert each measurement shown in the table. Drag the measurements in milliliters to their equivalent measures.

DRAG DROP VALUES

200 mL

1,403 mL

2,000 mL

5,023 mL

5,030 mL

14,003 mL

50,023 mL

50,030 mL

Liquid Capacity

Liters (L)

Milliliters (mL)

2 L

5 L 23 mL

14 L 3 mL

50 L 30 mL

Q10: Convert the measurements. Enter your answer in each box.

1 meter = centimeters

5 meters = centimeters

30 meters 49 centimeters = centimeters

12 meters 5 centimeters = centimeters

Q11: Each X on the number line represents a measurement. Drag the correct measurement to the box above each X.

DRAG DROP VALUES

45 L 98 mL

1 L 45 mL

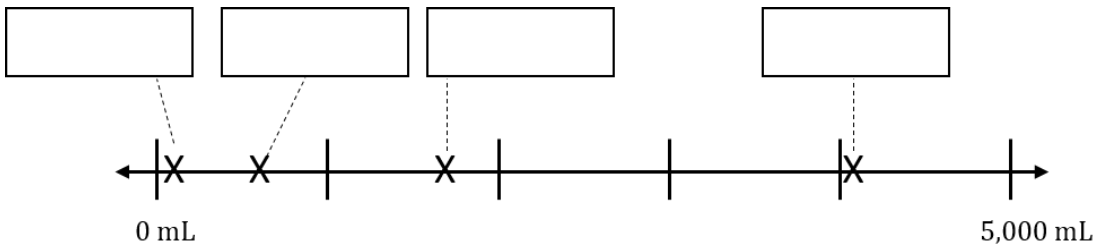
1 L 700 mL

78 mL

3 L 940 mL

632 mL

4 L 28 mL



Q12: Isa has a 2-kilogram bag of dog food. Her dog is on a special diet, and she measures out 388 grams of food for him. How many grams of dog food does Isa have left?

Isa has grams of dog food left.

Q13: Javier drinks 719 milliliters of water at school and 1 liter 456 milliliters of water at soccer practice. How many milliliters of water does he drink?

A 2,175 milliliters

B 2,165 milliliters

C 1,275 milliliters

D 163 milliliters
